



Trezi

# TREZIVERSE

A One of Its kind Metaverse For  
Architecture ,Engineering & Construction Industry

INDIA | UAE

# THE PROBLEM STATEMENT



# TREZIVERSE



# OUR OFFERINGS



TaaS



SaaS



Build Platform

# MARKET SIZE - **REVENUE**



TaaS



SaaS



Build Platform

**MS** \$11T (CI) | \$17.4B (TC)  
**AMS** \$44B (CI) | \$95M (TC)

**MS** \$18.91B  
**AMS** \$1140B

**Total Overall Opportunity >\$45B**

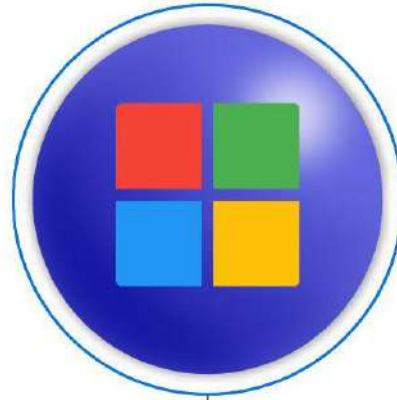
# PARTNERSHIP & ALLIANCES



Tech early-access,  
knowledge building



Hardware Fulfilment



Enterprise co-sell



For PSU procurement



# AWARDS & RECOGNITION

- World's First Immersive Platform for Marketing Building Products
- India's First VR Product for the Building Industry
- Top Indian and Global Architects and Building Product Manufacturers like Gensler, Schneider, Bluestar, Orient Bell, Venkataraman Associates using Trezi League of 10 at NASSCOM's Emerge Top 50 Companies in 2018 in India
- Immersive Product of the Year 2019 at NASSCOM Design4India Awards
- Meity NASSCOM Startup Women Entrepreneur Award 2020-21 in Emerging Technologies
- Only Immersive Tech Company in 12th Cohort of Microsoft Scaleup Program
- 3 Patents applied for, 7 trademarks registered. 2 new patents being applied for in the near future.
- Frost & Sullivan's Virtual Reality Provider Of The Year, Two Years In A Row
- 50 trailblazers of Indian Start Ups 2023 by Dun & Bradstreet



# KEY CUSTOMERS TaaS

## Real Estate Developers



## Product Manufacturers



## IPCs & Other Integrators





# OUR KEY CUSTOMERS

## Architects/ Designers/ IPC

CBRE

ADRIANSE GROUP  
DESIGNER-BUILDER PROJECT MANAGEMENT

CUSHMAN &  
WAKEFIELD

UltraTech  
CEMENT

Gensler

HKS

PAPER  
SPACE

RSP

ANJAY PURI  
ARCHITECTS

Flad

STUDIO  
LASANI

VESTIAN

TAKENAKA

Venkataramanan  
Associates  
ARCHITECTURE - URBAN DESIGN

## Enterprises & Developers

belgravia group

CHERRY  
HILL  
The Person of workplaces

Godrej

JUMEIRAH  
GOLF ESTATES

RAHEJA™  
UNIVERSAL

Shapoorji Pallonji

TECH  
mahindra

## Product Manufacturers

BLUE STAR

dur  
lum

orientbell  
tiles

SAINT-GOBAIN

Schneider  
Electric

Steelcase

WELSPUN  
FLOORING

## Infrastructure

ADITYA BIRLA  
UltraTech

DELHI  
METRO

GAR

LT

MEGAWIDE

ncrtc  
National Capital Region  
Transport Corporation

## Academy

Amity

AMITY  
UNIVERSITY

CHITKARA  
UNIVERSITY

IVS  
SCHOOL OF DESIGN

Pearl Academy

Sushant  
school of  
art and  
architecture

# TaaS **TREZI** as a **SERVICE**

TaaS is a range of customized professional solutions using cutting edge technologies like Metaverse, AI, VR, AR, MR, Voice based collaboration and others, which we offer to our clients. Our services are backed by a team of 3D Visual Artists and Developers who can help you to optimize your model geometry and create fabulous experiences.

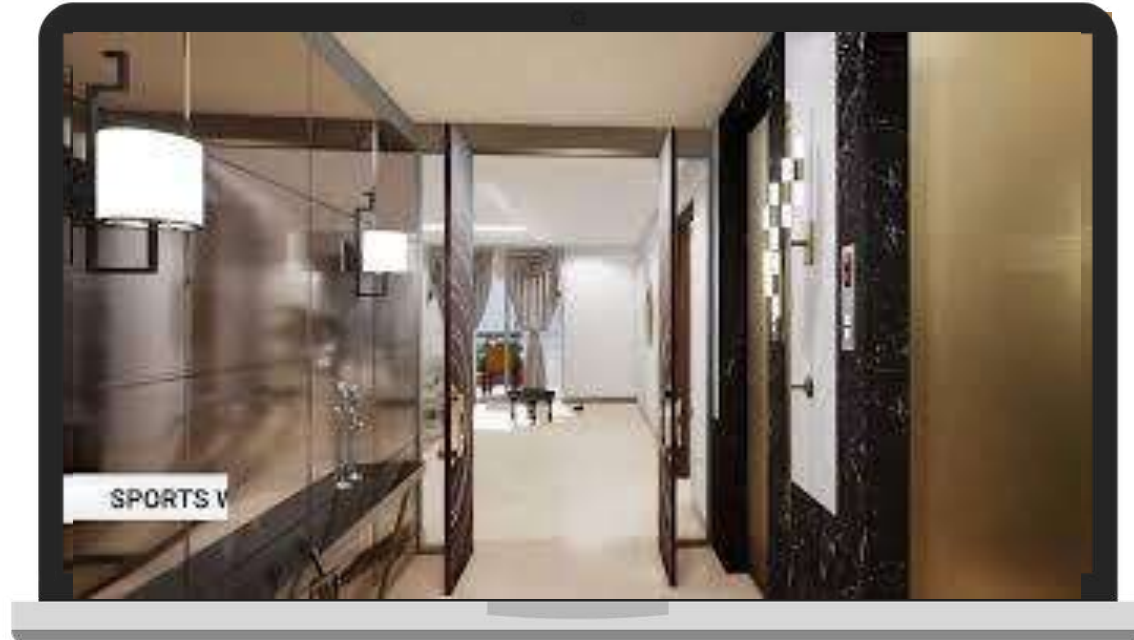
## Benefits & Impact



- Bespoke Solution for your specific use case
- Photorealistic Metaverse Experience
- Multi-user Environment with Customized Solutions
- Increases Efficient Communication, cost saving and time saving



# TaaS **SHOWREEL**



## Luxury Real Estate Customers



Trezi's AR/VR products and services to support design, marketing, sales, with high-quality, experiential, extensive, project-wide VR environments via Treziverse with project value-proposition across entire project area covering :

- Home automation, sensor based services and functions, etc.
- Meta-human assisted ultra luxury walkthroughs and experiences
- Interactivity and outputs for both customers and entire design & execution team



## Infrastructure Ops & Maintenance



How AR/VR benefit the following :

- Facility maintenance across all utilities and services
- Location of each utility point, evacuation paths, fire-assembly areas, with the possibility to overlay metadata e.g. door widths, fire-rating, etc.
- Shortest path video walkthroughs to exits and service points
- Familiarisation for visitors / staff via 360 panos of key areas e.g. fire assembly points, etc.





## L&D Programs in HSSE Drills



Using synthesised and 'as-built' virtual environments for :

- Understanding access to hazardous locations & processes
- Video walkthroughs from entry to hazardous locations showing what points will be encountered, refuge/shelter areas, hoist/hold/rest points.
- VR content for training on hazardous tasks



## Exhibition & Virtual Showroom



- Trezi empowers exhibitors to seamlessly showcase their products, services, videos, and promotional content
- With Trezi, exhibitors can transform their products into interactive 3D models
- Our platform enables attendees to connect through chat, video calls, and virtual meetups, fostering meaningful interactions just like at physical events



## AI based Voice Assistant



- Personalisation of applications with meta-humans of real humans.
- These meta-humans are integrated with the voice based AI to answer different questions being asked.
- The module can be integrated in various applications to enhance customer support and related experiences. This module enables both audio and textual responses.



## Virtual Aisles/ Shopping Exp.



- For remote shopping experiences; this can be used for retail shopping largely.
- With Trezi, customised applications can be developed for expanding the physical retail shopping experience to go virtual.
- This enables convenience to customers with a highly immersive customer experience.



- SmartVizX Showreel\_v3.1: <https://www.youtube.com/watch?v=feTjrgeriN4>
  - [https://www.youtube.com/watch?v=-kuv19\\_B4Ms](https://www.youtube.com/watch?v=-kuv19_B4Ms)
- Metaverse:
  - <https://www.youtube.com/watch?v=tnkQoFogFGo> (Citadel)
  - <https://youtu.be/Pro3sNZukw0> (Voice Assistant & virtual Shopping Exp.)
- Virtual experience of product/automation:
  - For Polo Elevators: <https://youtu.be/7Z6LpdGYCjw>
  - For Asian Paints: <https://www.youtube.com/watch?v=Y4K-EEYuNz4&feature=youtu.be>
  - For Welspun: <https://youtu.be/Jb-BpznyxQ4>
- Functionality and features:
  - <https://www.youtube.com/watch?v=YoVmrJrXqDw> (Apartment with foldable furniture)
  - <https://www.youtube.com/watch?v=4l1izB5bpeA> (Cabinet)
  - <https://youtu.be/fgAhQOICFdc> (Smarthome automation, Schneider)



- Mobile based:
  - Viviz: <http://bit.ly/2xinMgG> (Express Exclusive)
  - Viz 360: <http://bit.ly/2wDNcbf> (Apartment 360)
- For shoot based solutions:
  - <https://www.brookfieldindiareit.in/candor-techspace-sector-21-gurugram-virtual-tour/> (Office space)
  - <http://bit.ly/2xinlxs> (Manufacturing unit)
- Training Solutions:
  - [https://www.youtube.com/watch?v=bHjjiS\\_e804](https://www.youtube.com/watch?v=bHjjiS_e804) (Butt welding)
  - [https://www.youtube.com/watch?v=B\\_llcHa6Fzs](https://www.youtube.com/watch?v=B_llcHa6Fzs) (Crane maintenance)
  - <https://www.youtube.com/watch?v=zLUvzhJIPEE&t=3s> (Factory familiarization)
  - <https://www.youtube.com/watch?v=rUK1cCtc8DM> (FMCG-Product training)

# Customer Case Study



The **National Capital Region Transport Corporation (NCRTC)**, a Joint Venture company of the Government of India and states of Haryana, Rajasthan, Uttar Pradesh and Delhi, is mandated for implementing the **Regional Rapid Transit System (RRTS)** project across the National Capital Region (NCR), ensuring a balanced and sustainable urban development through better connectivity and access.

| Challenges   | Solutions  | Results  |
|--|--|--|
| <p><b>Demonstrating the design of complex railway stations is always a challenge</b> due to gaps in design communication and consumes a lot of time and effort.</p> <p>3D Renders and walkthroughs take a few hours to generate and <b>do not give users the freedom to walk inside the design model</b> anywhere they want.</p> <p>Managing large spaces is <b>difficult when it comes to teaching and familiarisation for learning, development and operations management</b>, given their complexity and high operational, financial and social impacts of risks and accidents.</p> | <p>NCRTC Team uses the Trezi platform to present large &amp; complex railway station design models with the help of Trezi platform.</p> <p><b>During design development, NCRTC personnel</b> and from the Ministry of Transport or Ministry of Housing and Urban Affairs, <b>use immersive VR</b> prior to construction, for optimising feedback and reducing errors during execution.</p> <p>NCRTC team has created a 25 seater VR lab using <b>the Trezi platform</b> for their <b>learning, development and operations management</b>, which shall use customised VR content built over time and across different training modules.</p> | <p>The large complex models are <b>easier to understand now</b> and with the help of location tags, the <b>presentation time has become way more efficient.</b></p> <p>During official visits, VR has played a major role in helping non-technical brains understand the 3D space and has made the <b>2-3 minute's design presentation more fruitful and satisfactory.</b></p> <p>The VR lab provides a future-ready learning &amp; development centre for technical personnel especially to improve understanding of crucial functions, difficult to reach areas and <b>prevent accidents, ensure business continuity and increase customer experience.</b></p> |

# Customer Case Study



**World Of Stones** is a notable, celebrated exporter and supplier of quality Indian natural stone and stone crafts. Founded in 1999, **World Of Stones** has attained new heights in a very short span. In their endeavour to take Indian stone products to every nook and corner of the globe, World of Stones is innovating with technology in creating world class experience for its customers.

| Challenges  | Solutions   | Results  |
|---|---|--|
| <p>The designs are highly customized and detailed. <b>Complexity of products and monolithic/large size of designs add to the challenge in communicating and explaining the product to the customers.</b> It is also very difficult to carry the samples around.</p> <p><b>Difficulty in visualizing</b> the products or designs in the customer's own residence or design.</p> <p>Technology intervention using latest tools to provide a near-real but virtual, distributed experience to high-end customers</p> | <p>Adopted <b>customized VR metaverse solution</b> along with Trezi Showcase. The solution includes a high-end, large residential villa with expansive wall and floor surfaces where these products could be seen &amp; <b>experienced as digital twins.</b></p> <p>Embedded lighting options within the environment, enhanced their product visuals and experience the effect of lighting/change under different lighting conditions</p> <p>With Trezi Showcase, the products are also available in AR, to be visualized in the real spaces.</p> | <p>Customisation resulted in a <b>personalized experience for WoS</b>, and differentiated their product experience wrt their competitors.</p> <p>The solution enabled a <b>virtual showroom experience</b> for their customers, to be taken anywhere and everywhere.</p> <p><b>High reusability</b> of the solution across different locations and POS', e.g. exhibitions enabled them to show their catalogs in entirety to their audience.</p> |

# TREZI as a Service **PROJECTS**



Exteriors, Max Estate  
CBRE



Interiors, Polo Elevators

# TREZI as a Service **PROJECTS**



Training & Development  
Welding Module



Metaverse, Mahindra Lifespaces  
Tech Mahindra





# CUSTOMER TESTIMONIAL

“Trezi has revolutionized our project experience. Its immersive features coupled with practical considerations are unparalleled. This tool seamlessly engages stakeholders, is user-friendly, and cost-effective. Trezi strikes the perfect balance between rendering quality and real-world application. It's not just a visualization tool; it's a crucial part of our project success”



**Rishabh Gautam**

**AGM/ S&T | NCRTC**



# CUSTOMER TESTIMONIAL

"Trezi Services helped us reduce the cost of sample flats. The virtual sample flat experience enabled a jaw-dropping world class, highly immersive experience for the customers and even at locations away from the project."



**Rahul Agarwal**

**AVP, Marketing | Omaxe Ltd.**



# CUSTOMER TESTIMONIAL

“The VR effort was very well received by our client. The time generally taken for the client to understand the design was cut by 50% due to the immersive nature of the VR solution.”



**Gensler**

**Smita Gupta**

**Former India Head | Gensler  
Esteemed Building Industry Leader**



Trezi

# THANK YOU

Jessica Gupta, Head of Sales – TAAS (India & UAE)



+91 98732 65220



[Jessica.g@trezi.com](mailto:Jessica.g@trezi.com)

INDIA | UAE